

# SUITE Med™

Beyond EMR



## IMS

Intelligent Medical Software

### ■ THE ORGANIZATION:

Pain and spine institute located in the San Francisco Bay Area.

### ■ THE CHALLENGE:

Streamlining office procedures and reducing operating costs by leveraging existing technologies and methods.

### ■ THE SOLUTION:

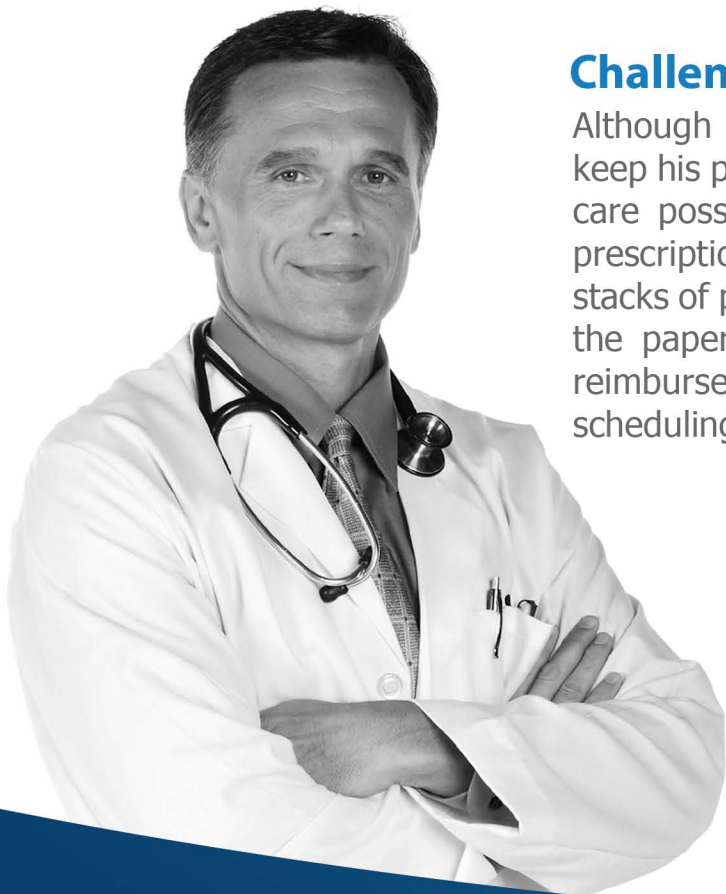
Intelligent Medical Software (IMS) gives medical practices HIPAA compliant, fully integrated EMR and practice management software for improved reimbursement, patient care and regulatory compliance maintenance.

### ■ THE RESULTS:

Dr. Darien Behravan, founder of the institute, is now able to treat more patients – with greater precision – in less time, while his staff enjoys a virtually paperless office.

# BAY AREA DOCTOR LEAVES NO PAPER TRAIL IN STREAMLINING HIS PRACTICE

Dr. Darien Behravan founded the Bay Area Pain and Spine Institute in the San Francisco Bay Area in 2005 after completing several post-graduate programs in radiation oncology, anesthesia, cardiac care and pain management. A member of the 2006 Board of Directors of the California Society of Industrial Medicine and Surgery, Behravan, a doctor of osteopathic medicine, also has lectured extensively on interventional pain management and is board eligible in anesthesia. His extensive education, training and gentle touch have made Behravan a favorite among D.O.'s in the Bay area, but there's another reason his patients find a visit to his office a unique experience.



## Challenge

Although Behravan's dedicated staff has always strived to keep his practice running smoothly to ensure the best patient care possible, keeping up with multiple charts, faxes and prescription orders forced them to spend valuable time on stacks of paperwork to keep the office in order. In addition to the paperwork, his staff had to deal with issues such as reimbursement, regulatory compliance and complicated scheduling.

Dr. Behravan knew that one way to a more streamlined office was through an electronic medical record (EMR) system which would follow his workflow and allow him to customize the way his patients' records were stored. He knew that such a system would allow for increased efficiency not readily available with paper charts and improved accuracy through more secure entry of test and laboratory results.



333 Hegenberger Road, Suite 800, Oakland, CA 94621 • Phone: (866)994-6367 • Fax: (877)877-5269

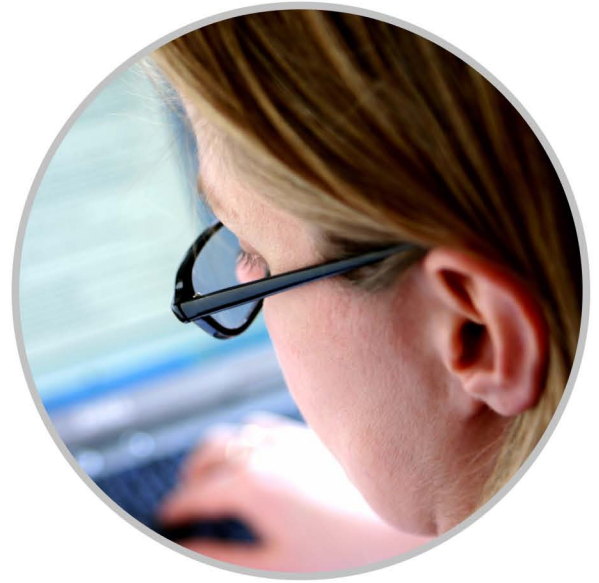
[www.SuiteMed.com](http://www.SuiteMed.com)

## Solution

Once Behravan decided on the Intelligent Medical Software (IMS) system from Oakland-based SuiteMed Software, Inc., he enlisted the help of his office manager, Jennifer Laudette, to help customize the system to fit the workflow of his practice. He wanted to be able to access patient charts electronically and have patient information at his fingertips without a lengthy and perplexing implementation.

SuiteMed's team provided tremendous support throughout the implementation process," remarked Behravan. "From a client's perspective, this is very important and much appreciated. They have exceeded my expectations. "

SuiteMed's IMS is a HIPAA-compliant, fully integrated electronic health record and practice management system that helps physician practices of any size operate in a paperless environment. Built from the ground up by physicians, medical office managers and caregivers, it includes templates created for specific medical specialties and integrates business operation and care delivery with a sophisticated Healthcare Portal. The Portal provides a communications link with patients for prescription refills, appointment requests and patient education.



# IMS

Intelligent Medical Software

Intelligent Medical Software (IMS 2007)  
has been certified by CCHIT.



## Results

“The IMS has streamlined our office work quite a bit,” explained Laudette. “Everything is at our fingertips – we don’t have to go looking for charts or faxes. Plus, it has really cut down on the time we spend on authorizations for workers’ compensation claims because we don’t have to rely on a paper chart system. And without paper products, we save money by not constantly having to order paper and other items such as toner for the printers.”

In addition to the time and money it saves Dr. Behravan’s staff with a paperless office, IMS allows them to meet the patients’ needs quicker and more efficiently, a pleasing proposition for the patients. Behravan has everything at his fingertips with the software, cutting down on the time he has to spend looking at past records as well as ordering prescriptions. With the electronic prescription capability of IMS, he can simply point and click on a customized screen that lists possible drug interactions, providing for faster orders and reduced medication errors which are possible with handwritten prescriptions.

“Once we look at an order, we can complete it – it’s done right then and there with a mouse instead of pulling the whole chart out,” remarked Laudette. “Dr. Behravan gets to spend more time with his patients, and the patients are impressed that they are able to take their reports with them right away. If they need authorization for a claim, they can get that right away, too.”

According to Behravan, though, one of his favorite things about IMS is the support he’s received from SuiteMed. “When I need something changed with IMS, it’s a matter of days before the programmers give me what I need, not a matter of months. They have live help online 24 hours. The features go on, and the advantages, in my opinion, are endless. Any person who is considering going into practice and/or switching to EMR should at least let IMS do a live demo for them once.”

### About SuiteMed LLC.

Developed by practicing pharmacists and physicians, **SuiteMed LLC** provides an innovative suite of intelligent, integrated, and intuitive Software Solutions combining both Practice Management and Electronic Medical Records supporting the primary process of healthcare delivery. Based in Northern California, SuiteMed’s revolutionary software solutions connect physicians, patients, labs, pharmacies, insurances, and long term care facilities nationwide. Providers are empowered with innovative tools that enhance the efficiency and profitability of their practice and the quality of care they deliver to their patients. These Software Solutions include **Intelligent Medical Software (IMS)**, **Intelligent Dental Software (IDS)**, **Intelligent Pharmacy Software (IPS)**, and **Intelligent Radiology Management Software (IRMS)**. With any of SuiteMed’s integrated solutions, service continues to be the first priority. For more information, please visit [www.suitemed.com](http://www.suitemed.com) or call **866-99-GOEMR** for a free personalized consultation.



333 Hegenberger Road, Suite 800,  
Oakland, CA 94621  
Phone: (866)994-6367  
Fax: (877)877-5269  
[www.SuiteMed.com](http://www.SuiteMed.com)